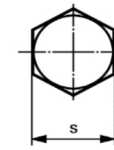
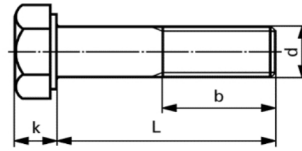


PARAFUSO SEXTAVADO ROSCA PARCIAL • Métrico • DIN 931 (* ISO 4014)



Ø Nominal	M3	M4	M5	M6	M8	M10	M12	M14	M16	M20	M22
Chave s	5.5	7	8	10	13	17 (*16)	19 (*18)	22	24	30	32
Comprimento de Rosca b	12.0	14	16	18	22	26	30	34	38	46	50
Altura da Cabeça k	2.00	2.80	3.50	4.00	5,5 (*5,3)	7 (*6,4)	8 (*7,5)	9.00	10.00	13 (*12,5)	14.00
Ø da Rosca d (máx)	2.98	3.98	4.97	5.97	7.97	9.97	11.97	13.96	15.96	19.96	21.96
Comprimento " L "											
20											
25											
30											
35											
40											
45											
50											
55											
60											
65											
70											
75											
80											
90											
100											
110											
120											
130											

Material: Aço Inoxidável • Rosca Conforme DIN 13