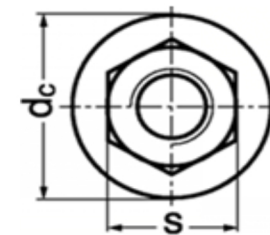
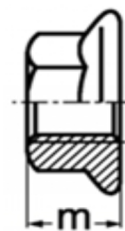
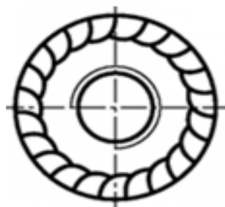
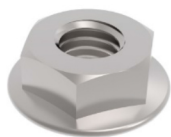


PORCA SEXTAVADA COM FLANGE ESTRIADA • Métrica • DIN 6923



Nominal D	M5	M6	M8	M10	M12	M14	M16	M20
Chave S	8	10	13	15	18	21	24	30
Ø Flange dc	11.8	14.2	17.9	21.8	26.0	29.9	34.5	42.8
Altura m	5.0	6.0	8.0	10.0	12.0	14.0	16.0	20.0

Material: Aço Inoxidável • Rosca Conforme DIN 13